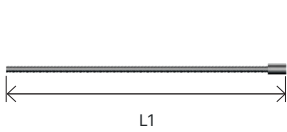




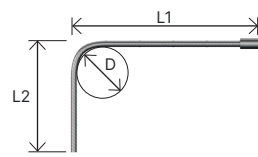
CODIFICATION DES FORMES LIAISON AVEC ROTATION

1ÈRE PHASE

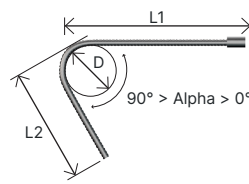
SMC 1



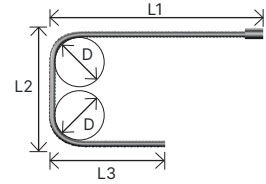
SMC 2



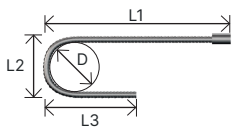
SMC 3



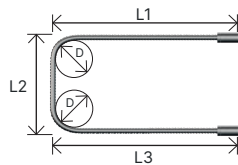
SMC 4



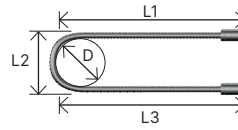
SMC 5



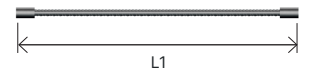
SMC 6



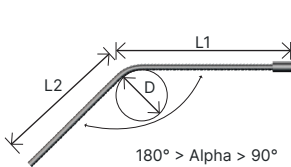
SMC 7



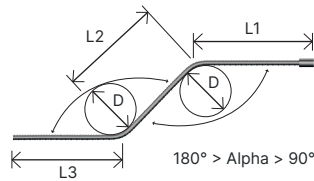
SMC 8



SMC 9



SMC 10



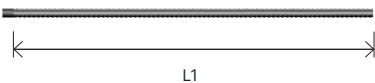
VERSION : 05-2024

SMC = filetage standard + coupleur

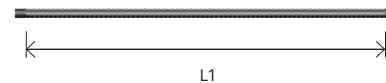
Pour les formes SMC6 et SMC7, les tolérances de fabrication autorisent un écart d'alignement des coupleurs.

2ÈRE PHASE

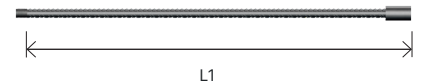
SMF 1



SMF 2



SMF 2C

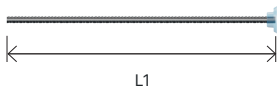


SMF = filetage standard

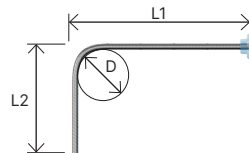
CODIFICATION DES FORMES LIAISON SANS ROTATION TYPE B

1ÈRE PHASE

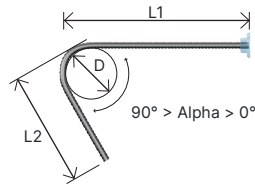
SM 1



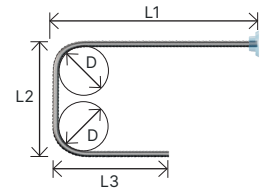
SM 2



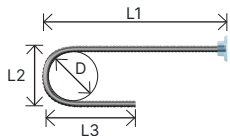
SM 3



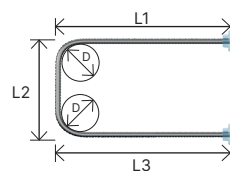
SM 4



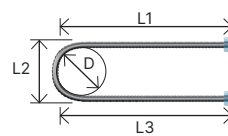
SM 5



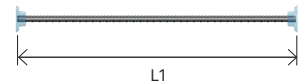
SM 6



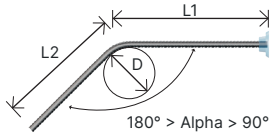
SM 7



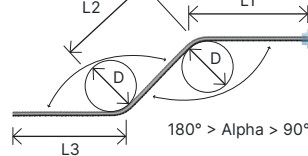
SM 8



SM 9



SM 10



VERSION : 05-2024

SM = filetage standard

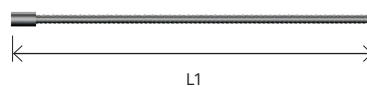
Pour les formes SM6 et SM7, les tolérances de fabrication autorisent un écart d'alignement des coupleurs.



Prévoir un POCKET FORMER pour laisser une réservation autour du filetage de première phase.

2ÈRE PHASE

SMLC 1

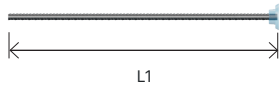


SMLC = filetage long + coupleur

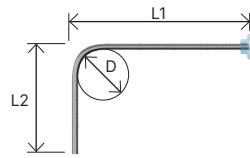
CODIFICATION DES FORMES LIAISON SANS ROTATION TYPE C

1ÈRE PHASE

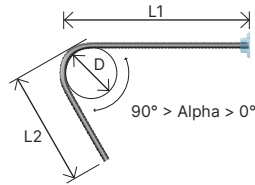
SM 1



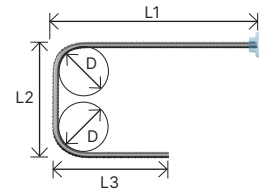
SM 2



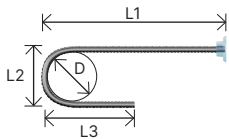
SM 3



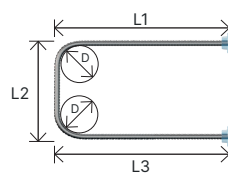
SM 4



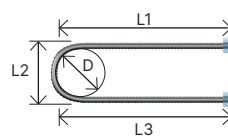
SM 5



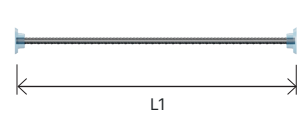
SM 6



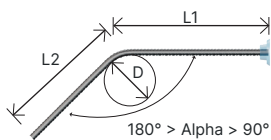
SM 7



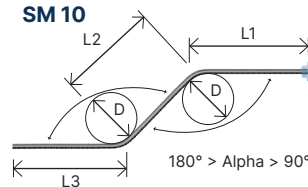
SM 8



SM 9



SM 10



VERSION : 05-2024

SM = filetage standard

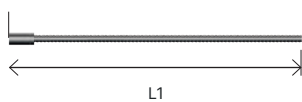
Pour les formes SM6 et SM7, les tolérances de fabrication autorisent un écart d'alignement des coupleurs.



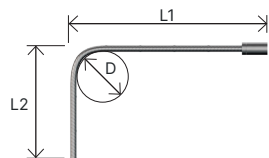
Prévoir un POCKET FORMER pour laisser une réservation autour du filetage de première phase.

2ÈRE PHASE

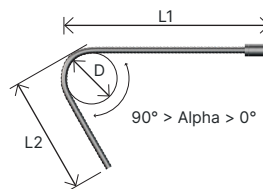
SMLEC 1



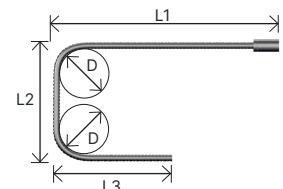
SMLEC 2



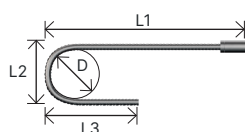
SMLEC 3



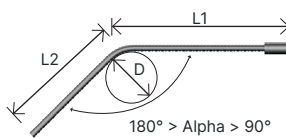
SMLEC 4



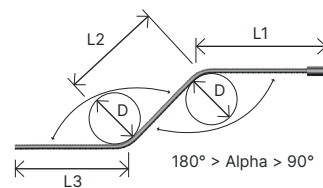
SMLEC 5



SMLEC 9



SMLEC 10



SMLEC = filetage long + contre écrou + coupleur